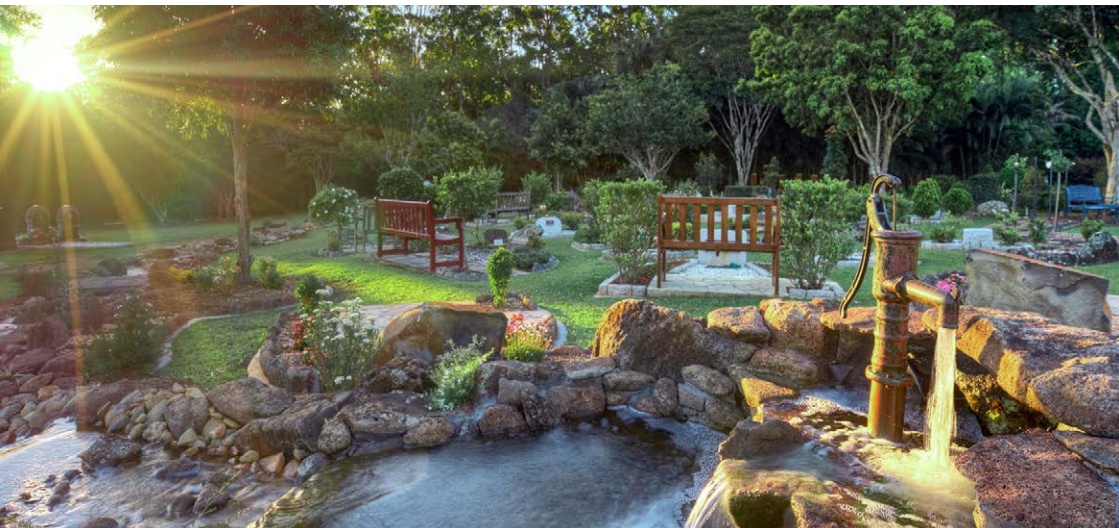


ALBANY CREEK

OUR SERVICES EXPLAINED

MEMORIAL PARK



ALBANY CREEK
MEMORIAL PARK
CEMETERY & CREMATORIUM



ABOUT US

Albany Creek Memorial Park is a place of peace, beauty and dignity – a perpetual statement of affection to the memory of our loved ones. Our park is a location of natural beauty set amongst manicured gardens, with lake and mountain views.

We have been providing families in Queensland with a private sanctuary for over 50 years and we offer a wide variety of options designed to reflect personal aesthetics and religious beliefs.

Albany Creek Memorial Park acknowledges that no two lives are the same. We reflect this strong sense of individuality by offering a wide choice of fitting and personalised memorials.

From the simplicity of a lawn burial site to an above-ground crypt or monument, we offer many options for families looking for burial memorials. We also have a beautiful array of cremation memorial options, from rose garden positions, granite and



seat estates, personalised rock gardens or creek memorials. Our personalised burial and cremation memorial options allow families to rest together, so that traditions can begin or be continued. Our beautifully landscaped gardens evoke feelings of being in a special place; a setting that is green, tranquil, and comforting.

We respect and cater for all faiths, denominations and traditions. Our Garden of Trinity is a uniquely Catholic Cemetery. The crypt and mausoleum spaces offered in the Crypts of the Sacred Heart are two examples of culturally appropriate memorial areas within our grounds.

We have two intimate chapels on site that are suitable for services of various sizes.



OUR FACILITIES

We strive to maintain high standards of beauty, peace and tranquillity, so that a moment of reflection can bring back a lifetime of memories.

Bridgeman Lounge

The Bridgeman Lounge offers a relaxed and comfortable atmosphere and is the ideal setting for an after-funeral gathering, and is conveniently available for families Monday to Saturday.

Overlooking our beautiful landscaped gardens and with views of the lake, the Bridgeman Lounge offers a range of catering options and also provides for special dietary requirements. This licenced venue is a modern function centre that has two rooms able to be converted to one large room accommodating functions of up to 150. The Bridgeman Lounge is closely located to the Garden and Lakeside Chapel.

Albany Creek Memorial Park offers the convenience of an on-site café, open Monday to Friday. The cafe is a relaxing place to have a light meal and refreshments

with friends and family.

Our Chapels

Albany Creek Memorial Park offers two chapels that are available for burial and cremation services, whether intimate or large.

The Garden Chapel has a unique design and a relaxing atmosphere. The chapel has seating for 80.

The Lakeview Chapel overlooks our serene lake and beautifully manicured gardens. With seating for 100 people, it provides an ideal setting for a memorial service.

Each chapel offers modern audio visual systems for families to play presentations, music, images and video using many popular file formats. Our chapels also allow families to seamlessly record the service for future reference and sharing with others. We are able to offer live webcasting of services for those friends and family members who may not be able to make the funeral.

For more information on our webcasting service please contact your funeral director or our office.



MEMORIALS

Memorials honour and pay tribute to those we have lost. Each memorial is a focus for reflection and a permanent marker of a life lived, where family, friends and future generations can come to remember and pay their respects. Parklands or other places that were special to a loved one may not be around in the future, which is why it is important

to consider permanent memorial parks and gardens as a final resting place.

We take great care with all memorials - they are expertly tended to by our skilled grounds team throughout the year.

Whatever your choice of memorial, we can help you create an everlasting place of remembrance.

FINDING YOUR LOVED ONES

Locate a final resting place or memorial site in our park gardens and lawns with the help of Resting Place from HeavenAddress.

Visit albanycreekcrem.com.au/find-loved-ones

for the link to Resting Place. Where you can enter the name of the family member or friend in the search field on the Resting Place page and discover the location of the memorial within our grounds.

BURIAL MEMORIAL OPTIONS

Hillcrest Burial

Hillcrest Gardens offers families beautifully finished burial memorial options from headstone lawn burial sites to premium granite Heritage Family Estates.

Hillcrest is set amongst manicured gardens and overlooks the grassland and lake of Albany Creek Memorial Park.

Lawn Burial

Lawn burials create an open vista within a broad, landscaped, and easily traversable space. Memorials are marked at ground level with bronze plaques that can be personalised with your own inscription.

Traditional Headstone

A truly personalised burial site with a beautifully carved granite headstone and finished with a pebbled granite bed.

Crypts of the Sacred Heart

An above ground burial option in

keeping with family and cultural traditions; this is a beautifully presented, peaceful, quiet and respectful place. Private family areas are available within our Crypts of the Sacred Heart.

Stations of the Cross

The Garden of Trinity features 15 Stations of the Cross which are nestled amongst beautifully landscaped gardens and tell the story of the crucifixion and resurrection of Jesus Christ. Cremation memorial options are also available in this area.

Burial Estate

Each estate allows for multiple burial placements and enhances a sense of togetherness. This is an ideal way for members of a family to be memorialised together and it can be personalised through a wide range of options.

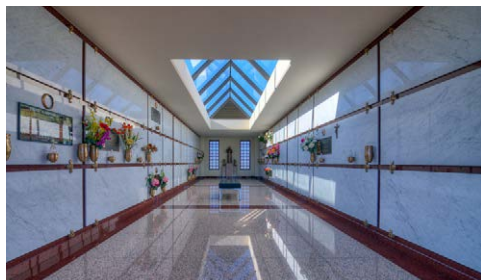
For further memorial options please visit MyMemorial.com.au



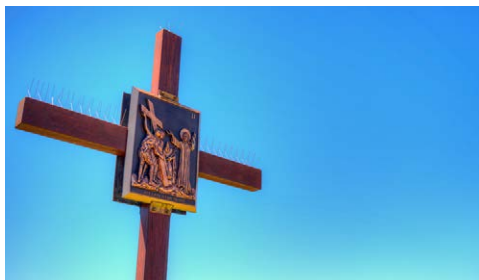
Hillcrest burial memorial



Traditional Headstone burial memorial



Crypts of the Sacred Heart burial memorial



Stations of the Cross burial memorial

THE BURIAL PROCESS

Burial is a time-honoured method of committing a loved one's remains. Albany Creek Memorial Park always:

- Abides by government regulations
- Follows our own strict policies, procedures and code of behaviour, and
- Provides dignity for all burials within our grounds.

Choosing a burial plot

Before selecting a burial location we recommend you check with family members to determine if a burial plot has been prearranged. More information on prearranging memorials is on page 8.

If a burial site hasn't been arranged in advance, your funeral director will recommend a location that meets your family's needs. Your funeral director will usually make an appointment for you to visit us and tour our grounds. This will assist you to select an appropriate site, to view and discuss your options, and to have your questions answered.

Burial confirmation

Each burial requires a Burial Confirmation Form which your funeral director will complete for you, or assist you to complete.

It is important that we receive this form before the burial is to take place, as we cannot proceed without it. The form will also provide us with specific directions about the burial process, so that we can meet cultural or religious requirements that are important to your family.

Before the burial

The main task to be performed before the burial is the preparation of the grave site.

After the grave has been dug, its dimensions are checked against the information provided in the Burial Confirmation Form, to ensure it is correct and that any cultural or religious requirements you requested have been provided for.

At the time of the burial

At the time of burial a verification of the deceased is performed. This is done by checking the funeral director's records that travel with the deceased.

The coffin will then be placed on a lowering device next to the graveside. Some families will hold a service at the graveside, while others do not.

Flowers can be placed on the coffin if requested, and single flowers can be placed in the open grave. The coffin is then lowered into the grave using the lowering device.

After the service

After family and friends have departed, the burial staff will collect the lowering device and other equipment. The site is then ready for filling with soil.

Once filled in, the burial staff compact the soil and prepare the site for returfing. The turf will be placed on top of the grave site as soon as the ground has settled.

Headstone and plaques often take time to be manufactured and delivered. When the memorial has been completed, we will advise you of this.

CREMATION MEMORIAL OPTIONS

Rose Garden

This is one of the most classic memorial types. Set underneath your choice of rose bush, these memorials are both eye-catching and elegant. Our rose gardens are meticulously cared for by our grounds staff to ensure that they look magnificent each and every year.

Garden

These are available in a variety of settings within the grounds. Garden memorials are set within beds that abound with colour. The gardens are tended throughout the year, ensuring colour which attracts native fauna.

Family Estate

With multiple placements, these memorials are designed to be a personal garden, with your choice of plants, granite or bush rock

construction and even finished with photos making it truly personalised to your family.

Creekside

Creekside memorials are set amongst natural landscaped bush rock gardens within the park. Single Positions and Family Estates are available.

Chair Estate

With its own chair for quiet reflection, a family chair estate memorial is the perfect place for multiple memorialisations to reflect on the life of loved ones. Personalisation through the selection of finish, plants and inscriptions is available.

You can also visit the MyMemorial.com.au website for more information.



Rose Garden cremation memorial



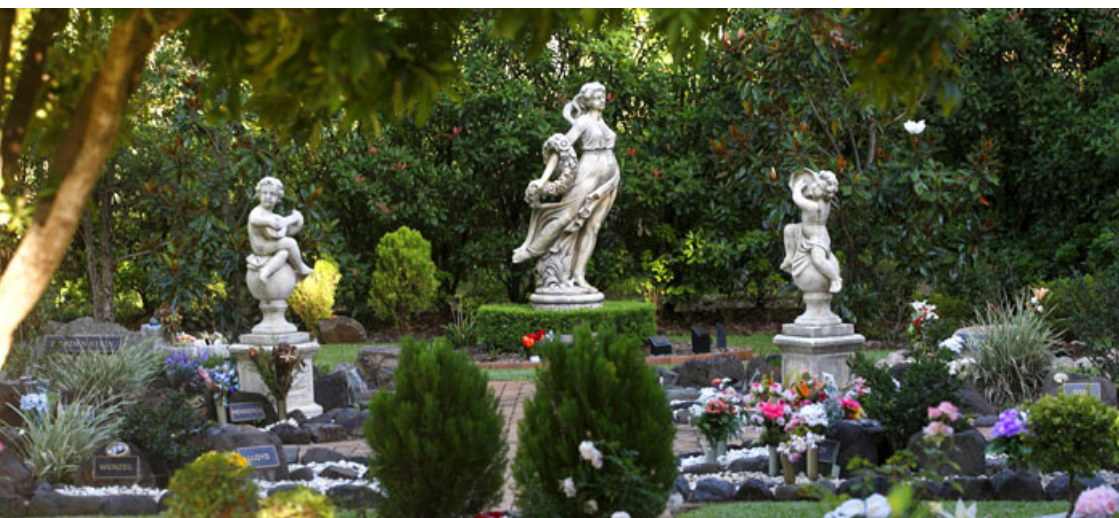
Creekside cremation memorial



Garden cremation memorial



Chair Estate cremation memorial



PREARRANGING A MEMORIAL

THE QUESTION OF PREARRANGING

Organising memorial requirements in advance is worth considering for a number of reasons. It ensures that specific instructions will be carried out, relieves loved ones from making such a personal decision at what can be a very emotional time, and is financially wise.

From a practical point of view, prepaying your memorial in advance helps your family financially.

It also allows for future family placements to be secured.

Why choose a lasting memorial?

One of the most fundamental things to consider is how you or a loved one should be remembered after the funeral service has been conducted. Deciding on a memorial that family and friends can visit, is well worth considering.

Memorials are a focus for reflection and a permanent marker for a life lived, where family, friends and future generations can come to remember and pay their respects. As time passes, the significance of key dates (anniversaries, birthdays, religious days) grows and so too does the importance of visiting a memorial.

Memorials are as personal as you desire them to be. There are many options available to help capture the spirit of each individual, including your cultural and religious customs.

For more information on memorial options, to arrange a tour of our grounds and for information on prearranging, speak to our consultants.



COPING WITH GRIEF

STARTING THE HEALING PROCESS.

It is best not to put a time frame on the whole experience of grief. This creates unrealistic expectations and doesn't allow for individual differences.

Some tips for facing this change in your life include:

- Talk about it – it will help let it sink in
- Look after yourself – eat, drink, sleep, get fresh air and try to avoid alcohol and sedatives
- Ask for help – don't think you have to cope on your own
- Understand your friends – they can be impatient so tell them what you feel and share your grief
- Stay positive in your thoughts
- Accept that loss is a part of life

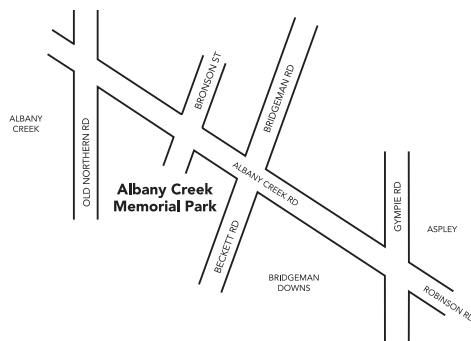
- Be aware of advice givers – don't allow people to entice you into replacing or avoiding your grief – e.g. going on holidays or buying a car
- Be prepared for ups and downs – memories sparked by birthdays, anniversaries etc can bring you down.

You need to find a reassuring way to remember the person – such as visiting their permanent memorial.

Our staff keep updated with what the experts say and we collect resource materials and can provide these free of charge.

Further information about coping with grief or helping people experiencing grief can be found online at MyGriefAssist.com.au

*My*GriefAssist



Albany Creek Memorial Park
400 Albany Creek Road, Bridgeman Downs QLD
4035

Opening times

Park Gate: Sunrise to Sunset, 7 days a week.

Office: 8.30 am to 5.00 pm Monday to Friday
and

9.00 am to 3.00 pm on Saturdays.

Phone (07) 3263 3033

albanycreekcrem.com.au

